

Share this:   

**LUNADA
BAY TILE**

**STONE & PEWTER
ACCENTS**

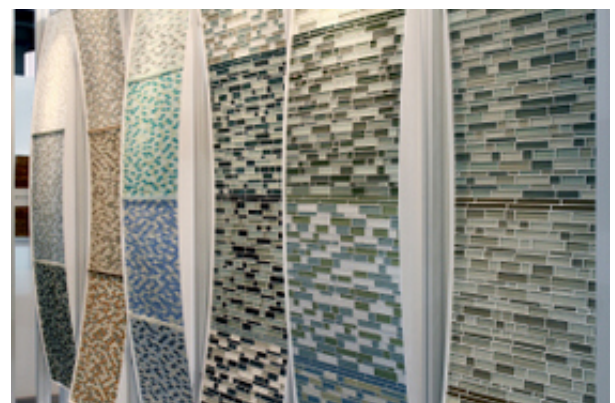
Stone & Pewter Accents Rebrands as Lunada Bay Tile

If you visited us at Coverings in Las Vegas, you were among the first to share in the debut of our new name and a brand new booth!

Why Are We Rebranding? Thanks to you, Stone & Pewter Accents has experienced tremendous growth over the past few years. Our product lines now reach well beyond the stone and pewter we began with, and we realized that we needed a name that better reflected our past, present and future. For this reason, we have decided to rebrand under the name Lunada Bay Tile.

Why Lunada Bay Tile? The name honors our history and is one of the first names we marketed under starting in 2002. Lunada Bay, located on the ocean's edge of the Palos Verdes Peninsula, is also a reflection of the light and lifestyle of the Southern California coast. It represents a design philosophy that artfully blends traditional craftsmanship with modern influences.

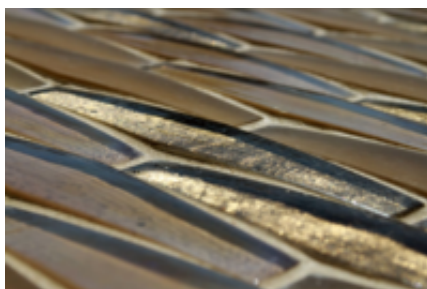
What You Need to Know. Over the ensuing months, we will begin to roll out all of the



[Subscribe](#) to our email list

need to transition to Lunada Bay Tile, including ways to update many of your existing marketing materials (your sales representative will fill you in on all the details).

New Booth Debut at Coverings. In honor of our new brand, we debuted a large, gallery-like booth in the center of the Coverings 2014 main show floor. It was the perfect showcase for our new tile and design ideas! Visit our [blog](#) and [Facebook](#) page for more rebrand insights and photos from the show.



[Join us on Facebook](#)

[Read the blog](#)

[Contact LBT](#)

3555 Lomita Blvd., Suite H | Torrance, CA 90505 US
