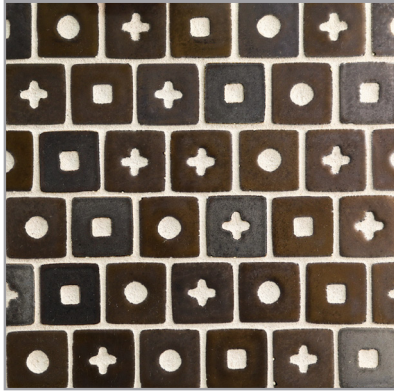




LUNADA
BAYTILE

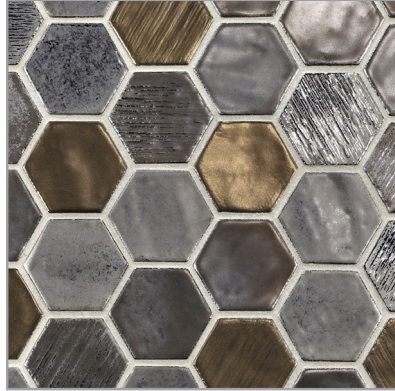
SHINJU

SHINJU PATTERNS

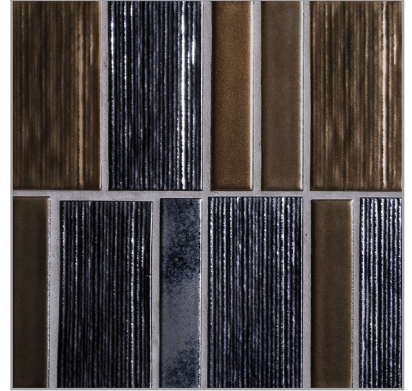


Silhouette Mosaic
(1 ¼ x 1 ¼)

Not available in the color Olympia.



Cambric Hex
(2" Hex)



Swell Mosaic
(¾ x 3 ¾, 1 ½ x 3 ¾)



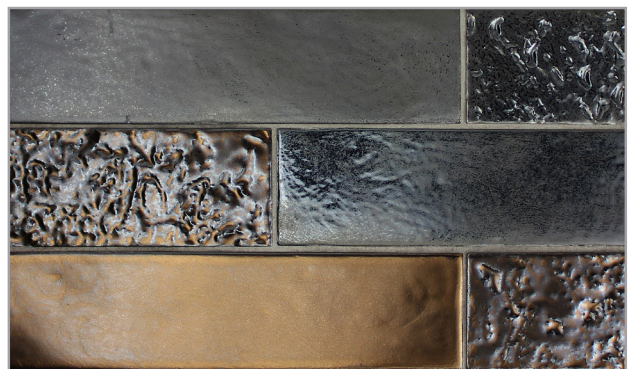
Tide
(4 x 4)



Crest
(4" Hex)



Smooth
(2 ½ x 9 ½)

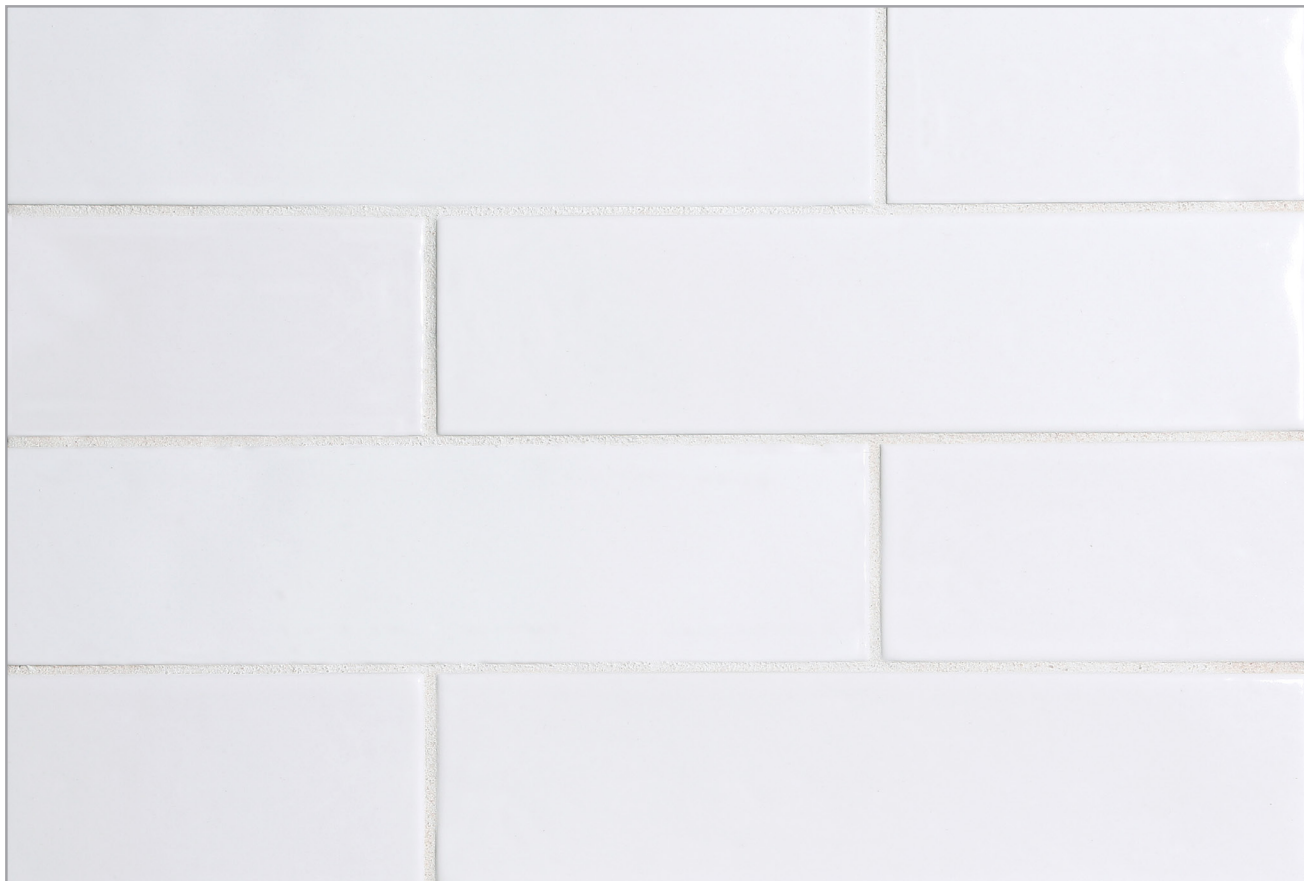


Reef
(2 ½ x 9 ½)

Equal blend of smooth and textured surfaces.



Liner
(¾ x 9 ½)



Kumamoto



Kushi



Moonstone

Glaze color may show shade variation between batches. Visit LunadaBayTile.com for more images.



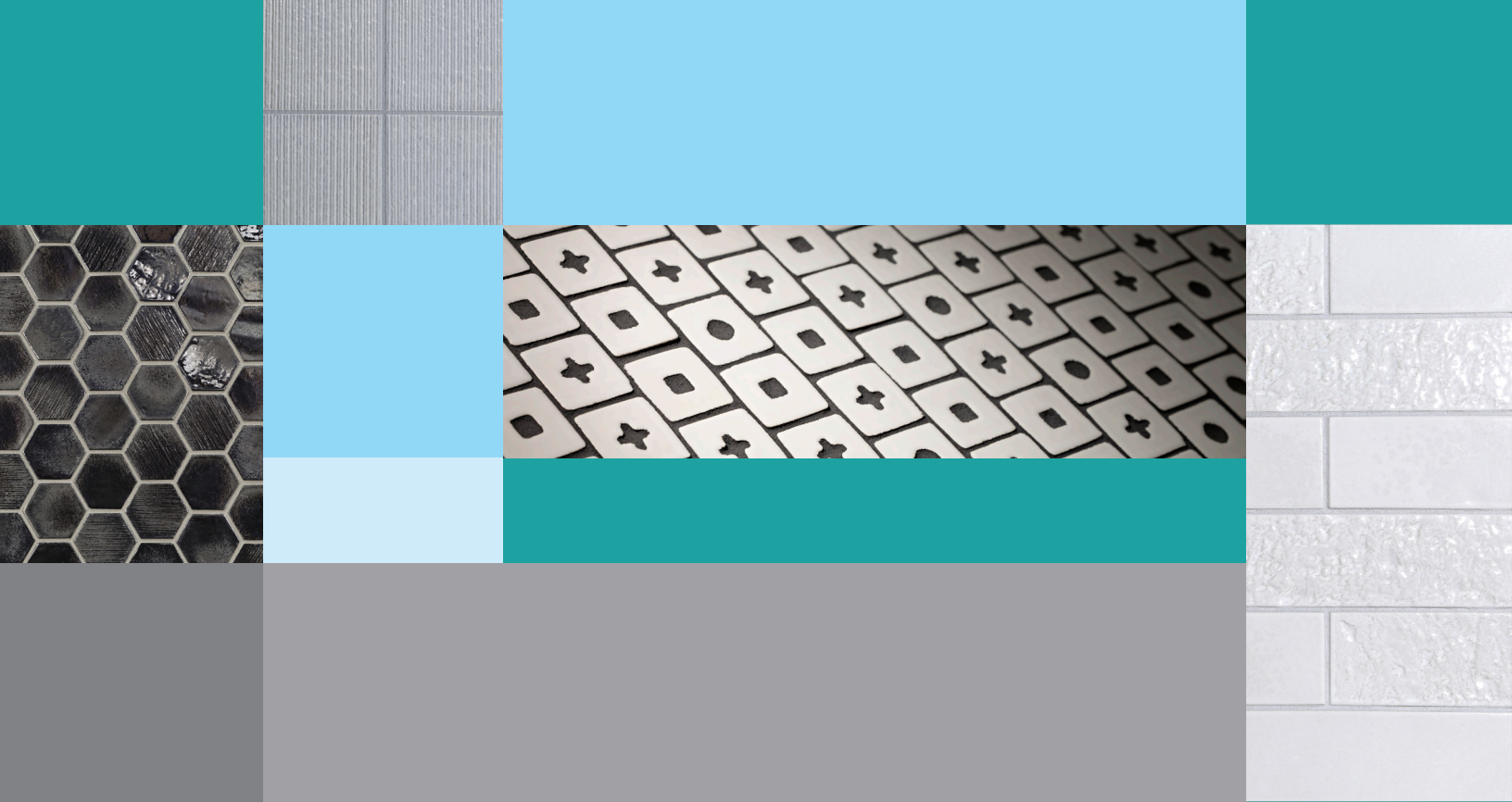
Pacific

Glaze contains multiple color variations between pieces. Visit LunadaBayTile.com for more images.



Olympia

Glaze contains multiple color variations between pieces. Visit LunadaBayTile.com for more images.



Shinju [Shin jū]

Shinju, the ceramic tile collection by Lunada Bay Tile, harvests inspiration from oysters, pearls, and the waters in which they live. Just as time and place affects an oyster's appearance, and the pearls they create, the texture and color of Shinju reflects the light and style of its surroundings. The series works beautifully on its own or in combination with our other ceramic, glass, and concrete tile collections.



Please visit LunadaBayTile.com for our complete product offerings, applications and installation instructions.

© 2019 Lunada Bay Tile. All Rights Reserved

