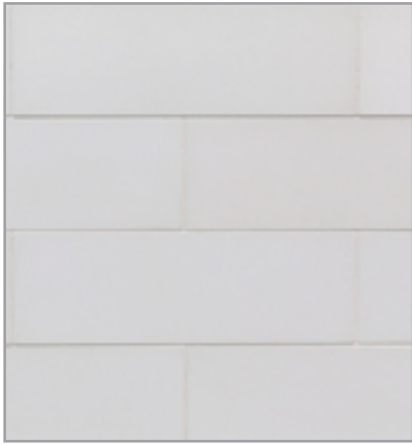




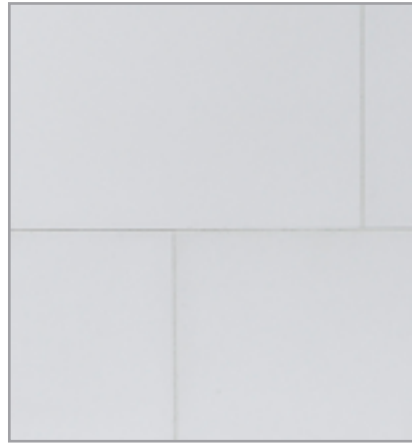
LUNADA
BAYTILE

CONTOURZ

CONTOURZ PATTERNS



3 x 9



6 x 9



4" Hex



Zen Break A
(3 x 9)



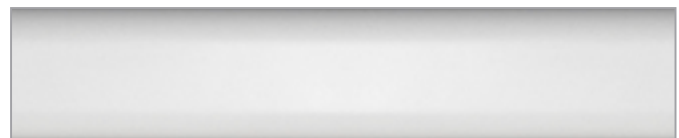
Zen Break B
(3 x 9)



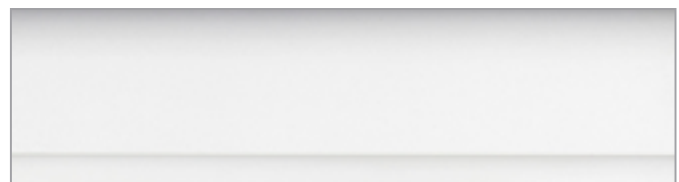
Fanfare Hex
(4")



Trifecta
(9 x 10¼)



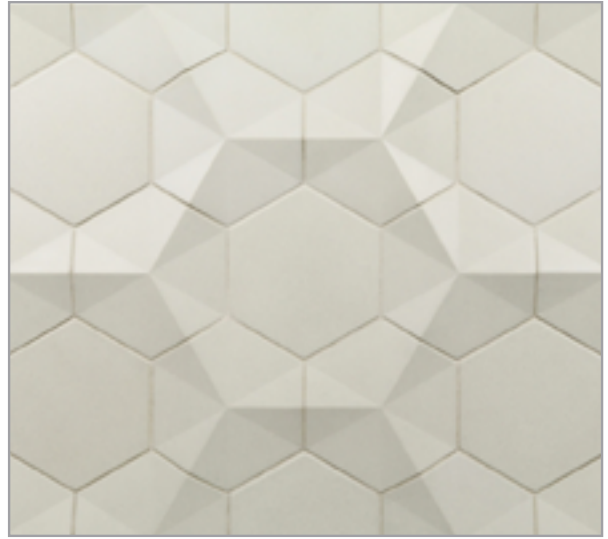
Retro Curve
(1½ x 9)



In & Out
(2½ x 9)



Sea Salt



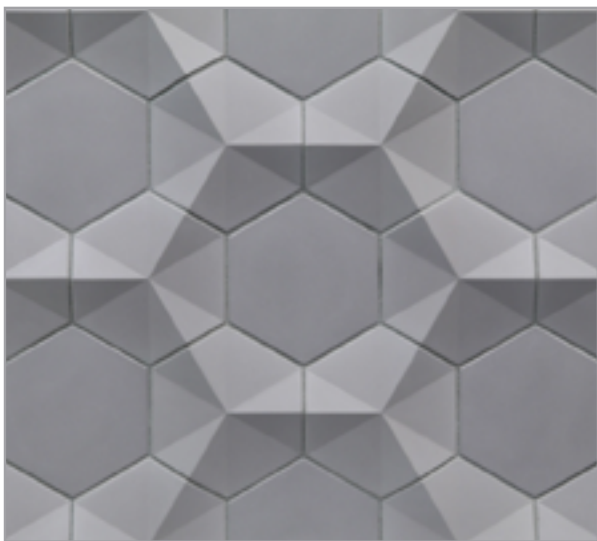
Soho



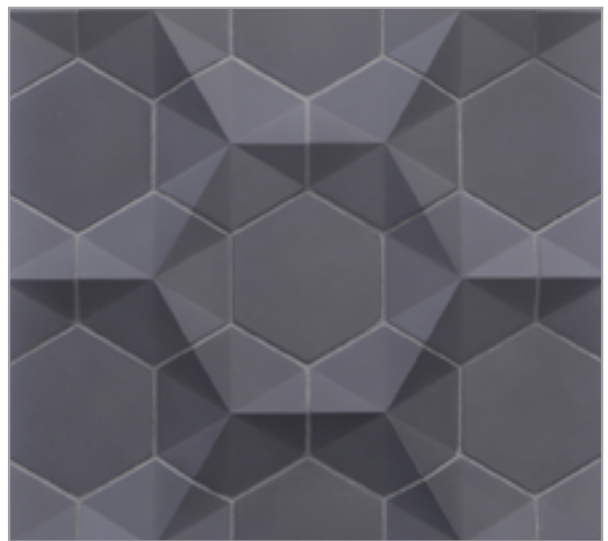
Grayce



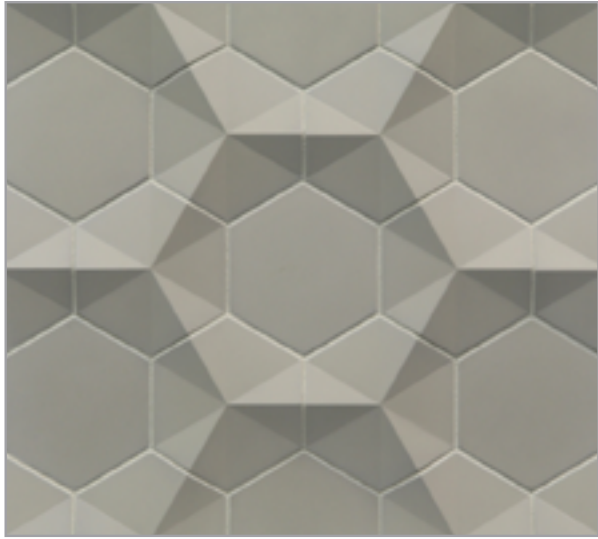
Grey Matter



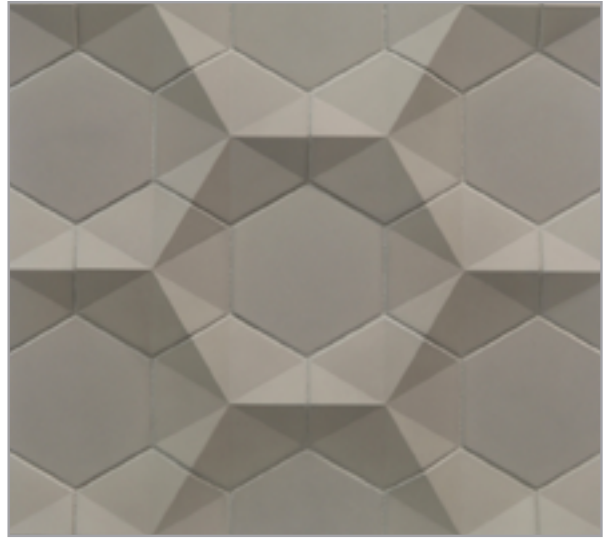
Steel



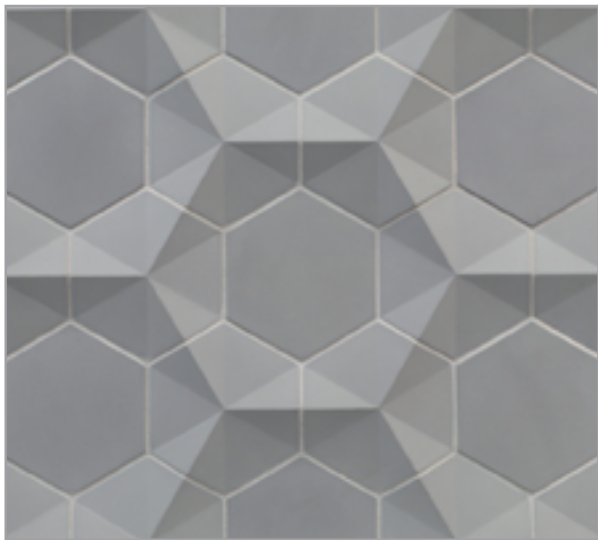
Nori



Camo



Portobello



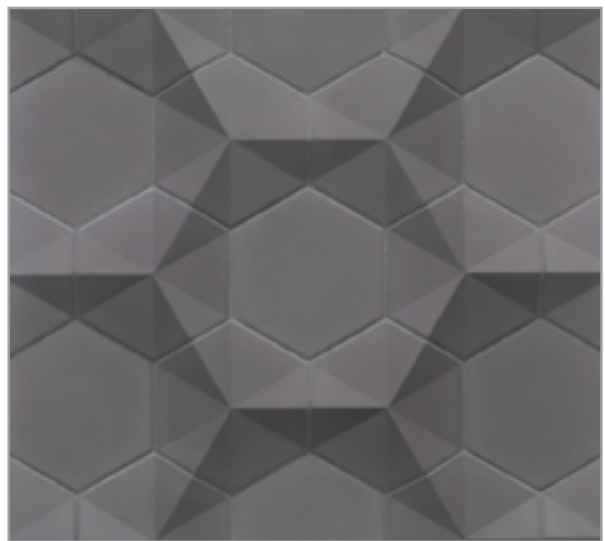
Stone Mountain



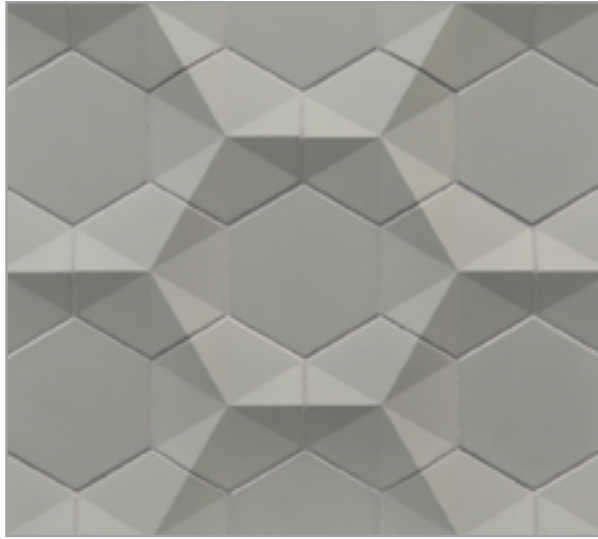
De-Construct



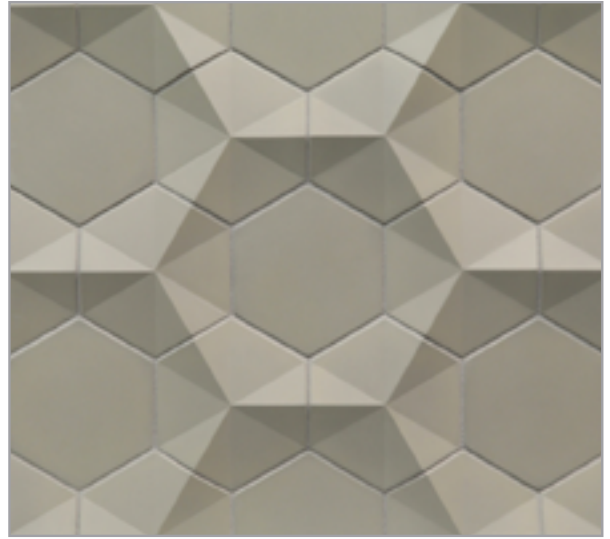
Macchiato



Irony



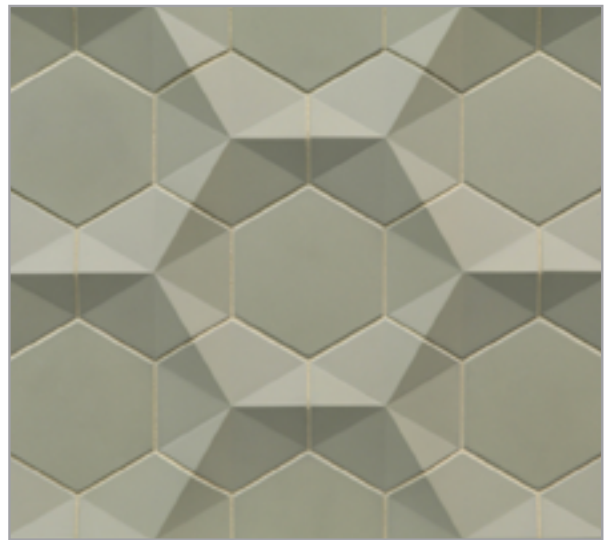
Herb



Ginger Route



Stoneware



Green Tea



Ginkgo

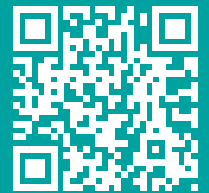


Urban Mist



Contourz [kon-toors]

Lunada Bay Tile elevates concrete tile design through engineering and artistry to deliver tactile surfaces with modern shapes and colors. The three-dimensional tiles transform walls into sculpture, and the flat field tiles create an atmosphere that ranges from quiet elegance to industrial. Specially engineered to the highest durability for residential and commercial installations, Contourz concrete tiles have a similar thickness to many of Lunada Bay Tile's ceramic and glass tile series giving the design opportunity to combine them with our other tile collections.



Please visit LunadaBayTile.com for our complete product offerings, applications and installation instructions.

© 2018 Lunada Bay Tile. All Rights Reserved

